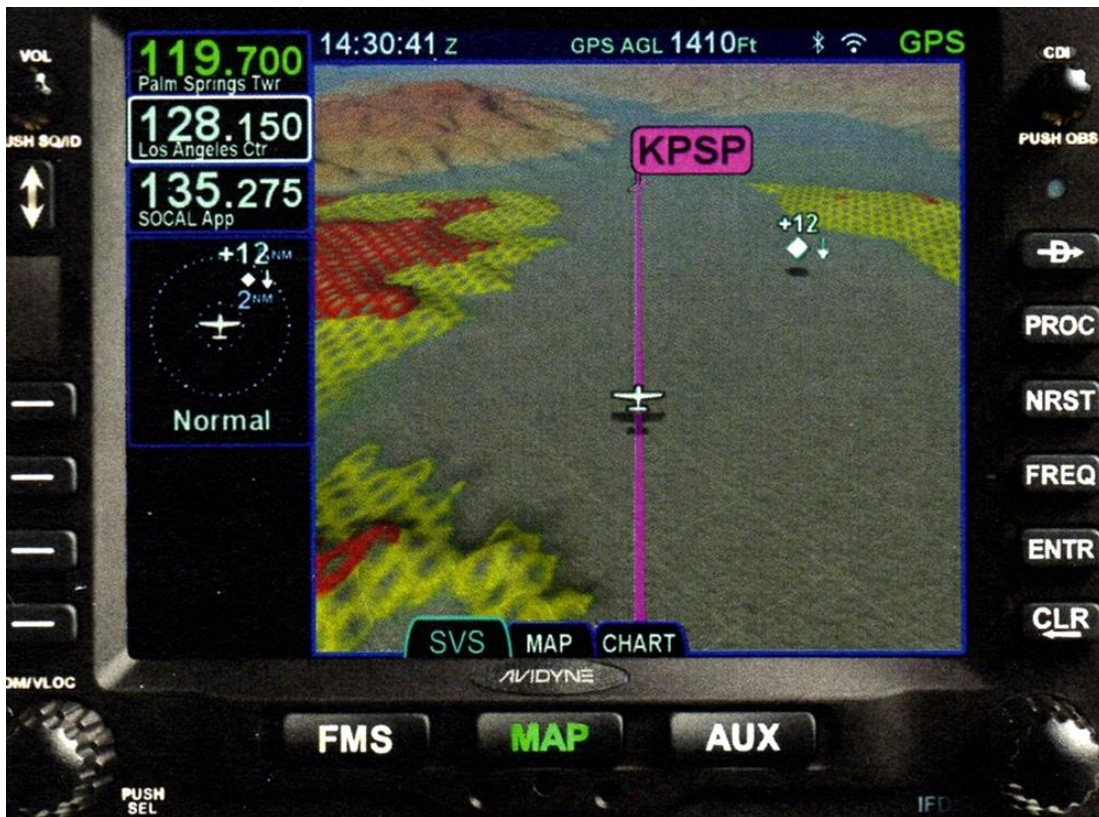


# AVIDYNE IFD540 Reference

For Training Purposes Only



## COM Radio Tuning

Radio Tuning can be accomplished through 3 different methods.



**Twist the COM/NAV knob.** Use the inner knob to adjust KHz and the outer knob to adjust MHz.



**Touch the standby frequency field** to display the numeric keypad. Then enter the desired frequency.



**Press the FREQ button.** Select the desired frequency.



**Activate the frequency.** Once the desired frequency has been tuned in to the standby, press the flip-flop button to make it the active frequency.



**The Emergency COM Frequency, 121.5 kHz,** can be quickly tuned into the Active com slot by pressing and holding flip-flop button for approximately three (3) seconds.

## Overview Diagram



To move your cursor, either:

1. Turn the **6** FMS knob (the outer ring scrolls through each box, whereas the inner ring scrolls through the fields of each box), **or**
2. Utilize hybrid touch by tapping the screen on a waypoint **or** in the blank space between waypoints.

<b>1</b>	Volume/Power/Squelch Knob	<b>9</b>	Frequency
<b>2</b>	Frequency Swap (flip-flop)	<b>10</b>	Nearest
<b>3</b>	Line Select Keys (LSK)	<b>11</b>	Procedure
<b>4</b>	COM/NAV Manual Tuning Knob (Push for NAV & Transponder)	<b>12</b>	Direct To
<b>5</b>	Page Function Keys (two-way rocker) FMS, MAP, AUX	<b>13</b>	CDI Nav Source
<b>6</b>	FMS Knob (context-sensitive: scroll, zoom/push to select)	<b>14</b>	Active Waypoint
<b>7</b>	Clear (delete)	<b>15</b>	Standby Frequency
<b>8</b>	Enter (select)	<b>16</b>	Active Frequency



To start an FMS edit, either:

1. Press the **8** ENTR function key,
2. Push the **6** bottom right knob, **or**
3. Tap the screen in the same field twice.